



## Assignment Brief

Module Title:	STRATEGIC MANAGEMENT AND LEADERSHIP 21/22	Module Code:	BBS_6_SML
Assignment No/Title:	Course Work 2	Assessment Weighting:	50%
Submission Date:	14 July 2022	Feedback Target Date:	15 working days after submission
Module Co-ordinator/ Tutor:	Mrs Salem Bekele	Word count	2000 (exclusive of tables, figures, references and appendixes)

Submission Instructions:

### This assignment is to be submitted electronically

- This assignment must be submitted electronically on by 14.55 on the submission date**
- To submit electronically, you must upload your work to the e-submission area within the respective module on Moodle.
- Multiple drafts can be submitted up to the submission date.
- Please remember you must leave at least **24 hours** between submissions if you make changes to your work. Each submission will overwrite the previous one until the due date and time has passed.
- You are reminded of the University's regulations on cheating and plagiarism. In submitting your assignment, you are acknowledging that you have read and understood these regulations.
- You are reminded that it is your responsibility to keep an electronic copy of your assignment for future reference.
- Your citation needs to follow the LSBU Harvard style referencing.

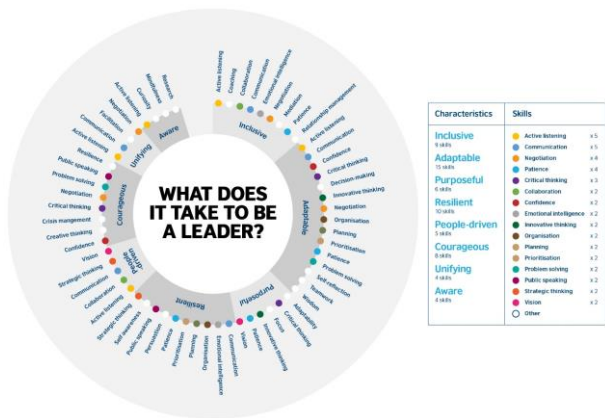
### This assessment relates to the following module learning outcomes:

<i>A. Knowledge and Understanding</i>	Understand leadership styles
<i>B. Subject Specific Intellectual and Practical Skills</i>	B1: Analyse, interpret, critically evaluate and offer solutions to multidisciplinary business problems B2: Synthesise key information from a variety of sources to identify and react to the key strategic dilemmas. B3: Access, select and utilise a variety of business information sources B4: Practice information technology skills through the use of electronic databases, presentation and graphical software, spread sheets for financial analysis and the world wide web for corporate information and publisher-based learner support materials
<i>C. Transferable Skills</i>	D1: Enhance independent learning skills (i.e. independent information search, independent analytical skill, self-assessment)

### The Assignment Tasks

Individual Report

Building on the leadership development mapping tool you were introduced to in the seminars, write a self-reflective report on the implications of the theoretical frameworks and practical skills learned on the module to your personal leadership development plan.



You are advised to adopt the following structure for your assignment:

REPORT STRUCTURE

- 1. TITLE PAGE (STUDENT ID, SEMINAR TUTOR, WORD COUNT)
- 2. TABLE OF CONTENTS
- 3. REFLECTIVE REPORT

Structure the answer to explore the three following elements:

- a) Self- acceptance: reflect on your personality leadership preferences and style according to the [Big Five Personality Test](#) (covered in seminar 11). What is your personality style? How accurately this style describes you? What are the main advantages and struggles you might have following this style?
- b) Self-management and leadership: what characteristics do you want to develop and why? (choose the 3 most important for you)
- c) Self-development: Choose maximum 3 frameworks/models and reflect on the frameworks and models of Strategic management and Leadership you studied on the module (benefits and drawbacks). How the new knowledge and skills from these frameworks/models will help you in your personal and professional development?

Guidance: Feel free to be as creative as you want. Use tables, charts, drawings....

- 4. CONCLUSION - Conclude with a brief of what you have discussed in the main body.

NB INTEXT CITATIONS AND A LIST OF REFERENCES ARE EXPECTED

Assessment Criteria:

The report is being marked according to the following rubric:

Task	INDICATIVE CONTENT	MARKS AVAILABLE for TASK: 100
Reflective report with the implications for personal and professional development in Strategic Leadership discipline.	a- Self-acceptance: reflect on your personality leadership preferences and style according to the <a href="#">Big Five Personality Test</a> (covered in seminar 1). What is a personality style? How accurately does this style describe you? What are the main struggles you might have?	30
	b- Self-management: what characteristics do you want to develop and why? (choose the 3 most important for you)	30
	a) Self-development: Reflect on the frameworks and models of Strategic management and Leadership you studied on the module. How will the new knowledge and skills help you in your personal and professional development?	40

Criteria for % of marks available:					
Criteria	Superior (80-100 points)	Excellent (70-79 points)	Very good (50-69 points)	Satisfactory (40-59 points)	Poor (0-39 points)
<b>Depth of Reflection</b>  (25% of Points)	Response demonstrates an in-depth reflection on, and personalization of, the theories, concepts, and/or strategies presented in the course materials to date. Viewpoints and interpretations are insightful and well supported. Clear, detailed examples are provided, as applicable.	Response demonstrates a general reflection on, and personalization of, the theories, concepts, and/or strategies presented in the course materials to date. Viewpoints and interpretations are supported. Appropriate examples are provided, as applicable.	Response demonstrates a minimal reflection on, and personalization of, the theories, concepts, and/or strategies presented in the course materials to date. Examples, when applicable, are provided and these are relevant to the assignment.	Demonstrating a basic level of understanding and use of the theories, concepts, and/or strategies presented in the course materials. Few links to the module content to show how these influenced their thinking.	Response demonstrates a lack of reflection on, or personalization of, the theories, concepts, and/or strategies presented in the course materials to date. Viewpoints and interpretations are missing, inappropriate, and/or unsupported. Examples, when applicable, are not provided.
<b>Required Components</b>  (25% of Points)	Response includes all components and meets or exceeds all requirements indicated in the instructions. Each question or part of the assignment is addressed thoroughly. All attachments and/or additional documents are included, as required.	Response includes all components and meets all requirements indicated in the instructions. Each question or part of the assignment is addressed. All attachments and/or additional documents are included, as required.	Response is includes crucial components and/or meets the requirements indicated in the instructions. Most questions or parts of the assignment are addressed. Most attachments and additional documents, if required, are presented and suitable for the purpose of the assignment.	Demonstrating basic ability to summarise components and/or does not fully meet the requirements indicated in the instructions.. Limited reference to models and tools introduced in the program to evidence team working.	Response excludes essential components and/or does not address the requirements indicated in the instructions. Many parts of the assignment are addressed minimally, inadequately, and/or not at all.

<b>Structure (20% of Points)</b>	Writing is clear, concise, and well organized with excellent sentence/paragraph construction. Thoughts are expressed in a coherent and logical manner.	Writing is mostly clear, concise, and well organized with good sentence/paragraph construction. Thoughts are expressed in a coherent and logical manner..	Writing is clear and/or organized in most places. Thoughts are expressed in a logical manner with some omissions.	Writing is unclear and/or disorganized. Thoughts are not expressed in a logical manner. There are more than spelling, grammar, or syntax errors per page of writing.	Writing is unclear and disorganized. Thoughts ramble and make little sense. There are numerous spelling, grammar, or syntax errors throughout the response.
<b>Evidence and Practice (20% of Points)</b>	Response shows strong evidence of synthesis of ideas presented and insights gained throughout the entire course. The implications of these insights for the respondent's future or current practice are thoroughly detailed, as applicable.	Response shows evidence of synthesis of ideas presented and insights gained throughout the entire course. The implications of these insights for the respondent's overall future or current practice are presented, as applicable.	Response shows some evidence of synthesis of ideas presented and insights gained throughout the entire course. Some implications of these insights for the respondent's overall future or current practice are presented, as applicable.	Response shows little evidence of synthesis of ideas presented and insights gained throughout the entire course. Few implications of these insights for the respondent's overall future or current practice are presented, as applicable.	Response shows no evidence of synthesis of ideas presented and insights gained throughout the entire course. No implications for the respondent's practice are presented, as applicable.
<b>Referencing (10% of points)</b>	The report follows a referencing style that complies with the Harvard referencing style, and the in-text citations are made purposefully.	The report follows a referencing style that complies with the Harvard referencing style, and the in-text citations are mostly purposefully.	The report follows a referencing style that mostly complies with the Harvard referencing style, though the in-text citations are not made purposefully.	The report follows a referencing style that does not comply with the Harvard referencing style, or only includes either the in-text citations or the reference list.	The report does not follow the Harvard referencing style and does not include any citations and/or a reference list.